

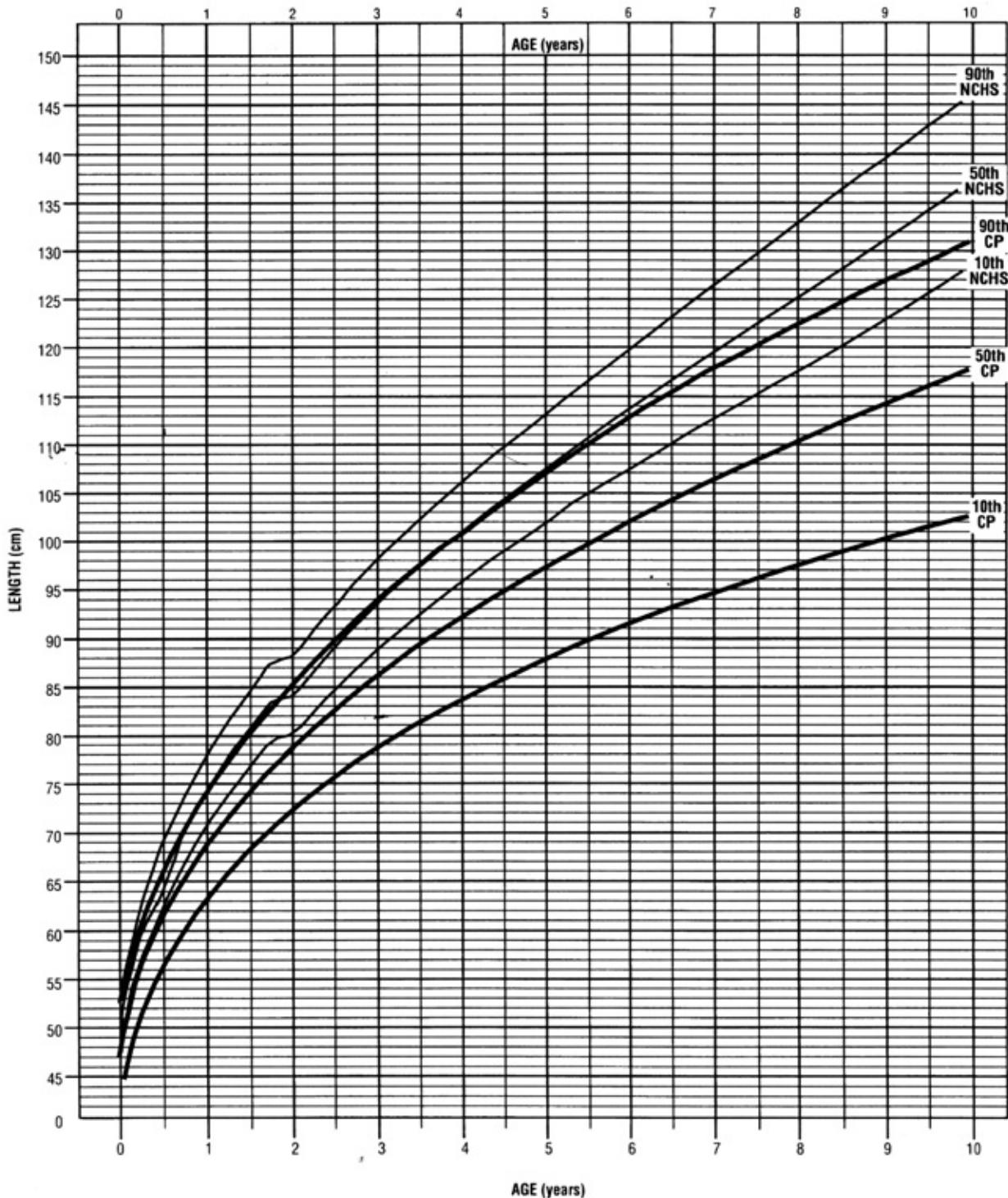
# Cerebral Palsy-Quadriplegia

Girls: 0 to 10 Years

Length / Age

Name \_\_\_\_\_

■ Cerebral Palsy — NCHS



\* Percentiles derived from National Center for Health Statistics (1979)  
\*\* Cerebral Palsy percentiles from Krack, J., Murphy, P., Miller, P., Zepher, S., and Wright, E. Pattern of growth in children with cerebral palsy. Journal of the American Dietetic Association 96:680-685 (1996).

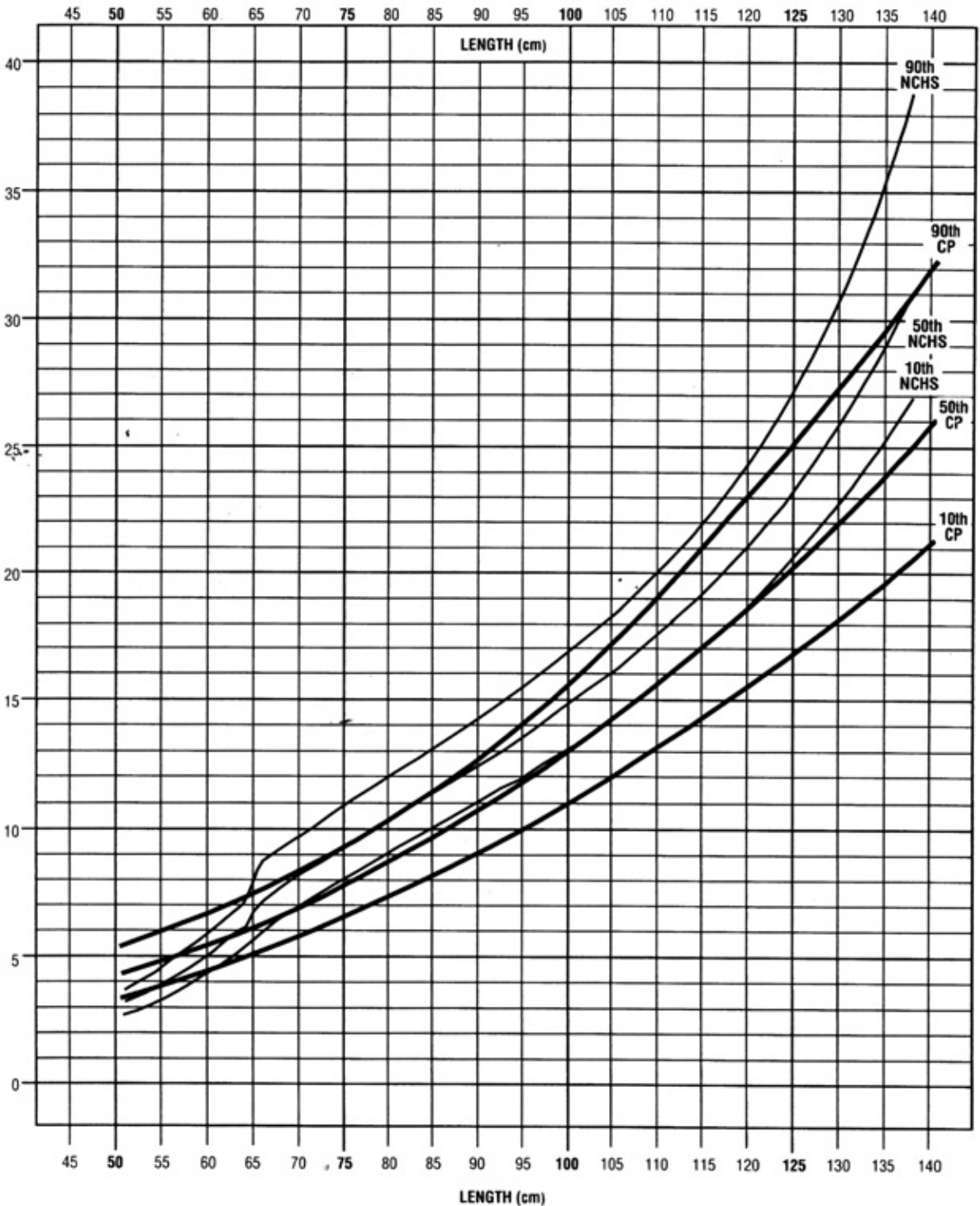
# Cerebral Palsy-Quadriplegia

Girls: 0 to 10 Years

Weight / Length

Name \_\_\_\_\_

■ Cerebral Palsy    — NCHS



\* Percentiles derived from National Center for Health Statistics (1979)  
\*\* Cerebral Palsy percentiles from Krick, J., Murphy, Miller, P., Zager, S., and Wright, E.  
Pattern of growth in children with cerebral palsy. Journal of the American Dietetic Association 96:680-685 (1996).

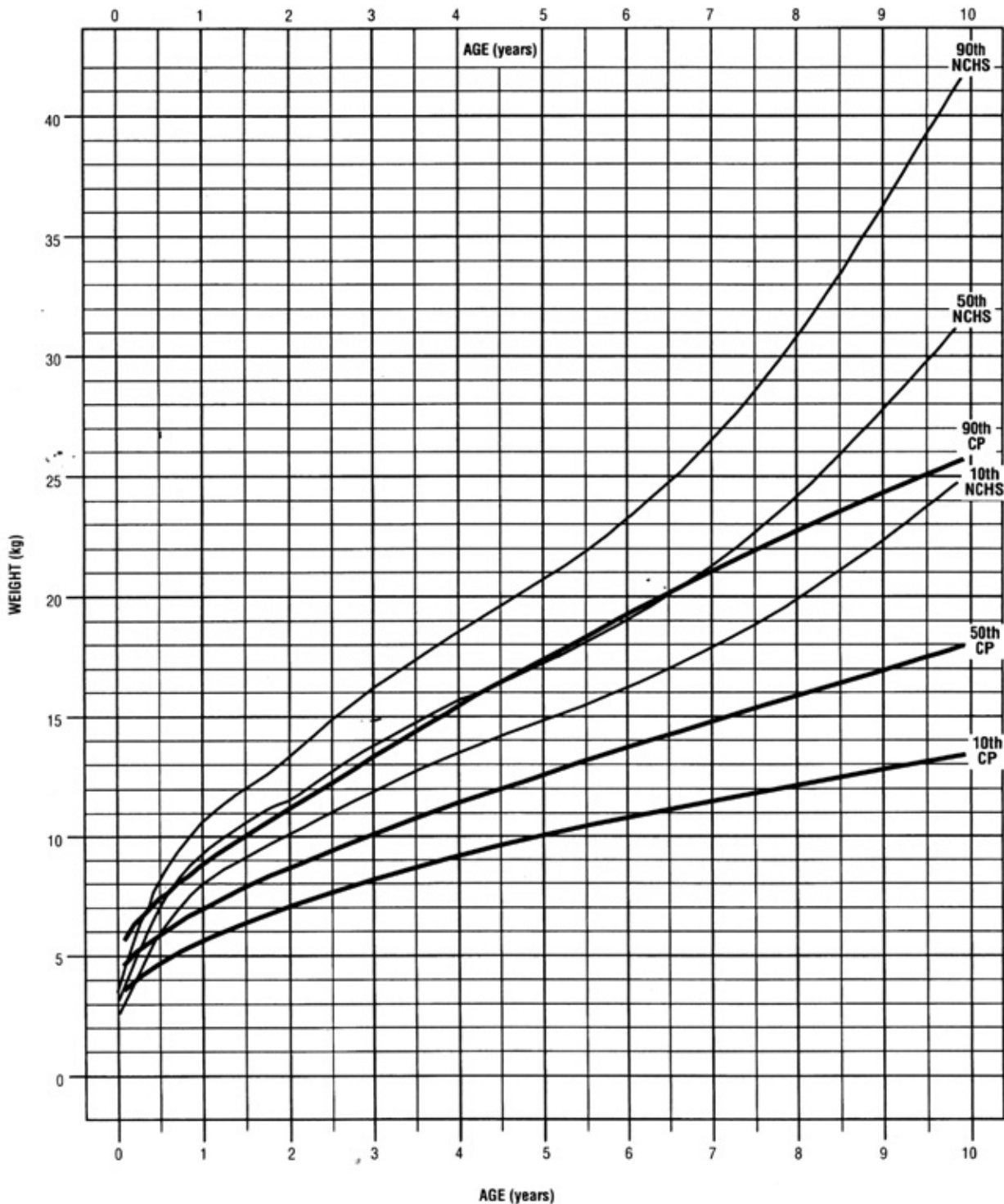
# Cerebral Palsy-Quadriplegia

Girls: 0 to 10 Years

Weight / Age

Name \_\_\_\_\_

■ Cerebral Palsy — NCHS



• Percentiles derived from National Center for Health Statistics (1979)  
• Cerebral palsy percentiles from Krick, J., Murphy, P., Zieger, S., and Wright, E.  
• Pattern of growth in children with cerebral palsy. Journal of the American Dietetic Association 96:680-685 (1996).

